



Application Form for Your Heritage

Notes on Completion

Please read the Introduction to the Your Heritage programme document.

There are help notes next to the questions throughout this application form. Please read them carefully. Keep your answers as brief as possible. As a guide, we would not expect your answers to any questions to be more than 200 words. Unless specified we do not have a word limit.

We support projects that relate to the national, regional or local heritage of the UK.

To receive a grant your project must:

Help people to learn about their own and other people's heritage (learning).

Your project must also do either or both of the following:

Conserve the UK's diverse heritage for present and future generations to experience and enjoy (conservation).

Help more people, and a wider range of people, to take an active part in and make decisions about heritage (participation).

Once your application is complete you should print out the declaration, ask the appropriate person to sign it, and send it, along with hard copies of any supporting documents you cannot send electronically, to your regional or country HLF office.

The official date we receive your application is when we have received your correct supporting documents and correctly signed declaration after submission of this online form. We will not assess your application if you have not:

Answered all the questions.

Provided the correct supporting documents (do not send more than we ask for).

Included the correct signature on the declaration.

What is your project title?

Restoration of Bluebell Heath, Stanmore Common

Date we received your form

02 Nov 2011

Reference number

YH-11-02351

Section One - Your Organisation**Your Organisation**

1a Name of your organisation Harrow Heritage Trust

Address of your organisation:

Address line 1 Harrow Heritage Trust
Address line 2 6 Malpas Drive
Address line 3 Pinner
Town / city Harrow
County
Postcode HA5 1DF

Is this a joint application on behalf of a partnership?

No

1b Is the address of your project the same as 1a?

No

If you are not able to give an address, give the full postcode of the nearest building and the name of the site or place.

Address of your project:

Address line 1 Nearest building is Stanmore Cricket Club
Address line 2 Warren Lane
Address line 3
Town / city STANMORE
County Middlesex
Postcode HA7 4LB

1c Details of main contact person

Name Stephen Bolsover
Position Chairman, Harrow Nature Conservation Forum. The Forum is a subcommittee of the Harrow Heritage Trust.

Is the main contact address the same as 1a?

No

Address:

Address line 1 40 Walton Drive
Address line 2
Address line 3
Town / city Harrow
County
Postcode HA1 4XA

Daytime phone number (inc area code) - this should not be a mobile number. 020 8933 2823

Mobile number (optional) 0779 483 7302

Preferred contact number Mobile

Email address stephenbolsover@gmail.com

Organisation not in the public sector

Community or voluntary group

If your organisation is any of the following, please provide the details shown.

Company - give registration number

Registered charity in England, Wales or Scotland - give registration number

1072773

Charity recognised by HM Revenue and Customs in Northern Ireland - give reference number

1e Describe your organisation's main purpose and regular activities.

Describe the purpose and aims of your organisation or partnership.

Tell us how many paid staff and volunteers work for your organisation (if you do not know the exact number, give an estimate).

Describe your organisation's regular activities and explain how they are funded.

The Harrow Heritage Trust works to secure the protection, preservation, restoration and improvement of the character and amenities of Harrow, and to promote the preservation and public knowledge of land and buildings of beauty or historic interest as well as areas of environmental importance. Presently it has 31 active members, all volunteers. There are no paid staff. Activities include:

- Small grants for heritage projects.
- Information plaques on buildings.
- Public works of art
- Working with young people.
- Co-organizing a biennial architecture award.

The Trust is funded by subscriptions from members and legacies plus earmarked grants. In previous years it received a grant from Harrow Council but will not in 2011-2012.

The Harrow Nature Conservation Forum is a subcommittee of the Trust and is the umbrella group for the voluntary wardens of many of the Borough's wild open spaces. Much of the wardens' time is spent in unstructured work including low scale maintenance, recording new species and noting changes in the distribution of established ones, and communicating with visitors. However we also run regular educational events such as guided walks and moth trapping evenings, and run volunteer working parties. We also man a stand at fairs and shows.

1f Bank account details

Account name	The Harrow Heritage Trust
Bank / building society name	National Westminster Bank PLC
Address line 1	Natwest
Address line 2	315 Station Road
Address line 3	
Town / city	HARROW
County	Middlesex
Postcode	HA1 2AD
Sort code (please use the format 11-11-11)	60-10-10
Select option	Account number only
Account number	57288143

1g Are you VAT registered?

No

1h Does your project involve buildings, land or heritage items?

Yes

Referring to the ownership requirements in the Introduction, please answer the following questions.

Does your organisation have, or are you planning to take out, a mortgage or other loans secured on the property or item?

No

Does your organisation own the building, land or heritage items outright?

No

Does your organisation have a leasehold on the building, land or items?

No

Who owns the building, land or items?

Harrow Council. Letter from David Corby, Service Manager of Public Realm at Harrow Council, included in supporting documents.

1i Does your project involve the acquisition of a building, land or heritage items?

No

1j Have you received advice from us before making your application?

Yes

Tell us the name of the person you have discussed your project with

Norma Pearson

Section Two - Your Project

2a What is the heritage that your project focuses on?

If your project is about heritage that is not physical (such as oral history or cultural traditions), tell us about the subject and the time period it covers.

If your project is about physical heritage (such as a building or a park), give us factual information about the asset, its size, when it dates from, the surviving features, its condition and why it is important in your local area.

Tell us if there is any official recognition of this heritage. For example, it may be a listed building (if so, give its grade) or a site of special scientific interest.

For centuries Stanmore Common was open heathland, shown thus on the 1822 Ordnance Survey map. In 1879 local naturalist Eliza Brightwen wrote "the furze blossoms on Stanmore Common spreading over more than 200 acres of undulating ground". When grazing ended woodland began invading, and by 1990 only pockets of open space remained, the largest being a 2.2ha area now called Bluebell Heath. Nevertheless Stanmore Common was given Site of Special Scientific Interest status because of the community of invertebrates associated with acid grassland/heathland. Since then the woods have continued to advance, so that Bluebell Heath is now divided by belts of secondary woodland into a series of isolated glades. As a result the Common lost its SSSI status in 1994 and is now classed as a Site of Metropolitan Importance for nature conservation. Within the glades persists the remnants of the characteristic acid grassland of the original heath, including plants such as heather and tormentil that are rare in the London area, as well as the rare invertebrates. Acid grassland is a Harrow, London and UK Biodiversity Action Plan (BAP) Priority Habitat. Restoration of an area of acid grassland is a specific objective in Harrow's BAP.

2b What is your project? Please give a short factual description of your project. We may use this on our website or for other publicity purposes.

Throughout this application we use the term heathland/acid grassland. Although these appear as distinct terms in the UK BAP, they are really a continuum, as reflected in the amalgamation of the working groups for the two London BAPs into the Heathland and Acid Grassland Working Group.

As befits its history and the presence of relict glades, Stanmore Common is identified on the Green Spaces Information for Greater London database as suitable for creating and/or restoring relict acid grassland habitat. We propose to restore Bluebell Heath as a continuous open space dominated by heather at the northwest end ("heathland") grading to a dominance of grass and acid grassland herbs at the southeast end ("acid grassland"), thus increasing both public amenity, by creating an open space rich in wild flowers, and biodiversity.

Volunteers will be trained in ecological surveying, tree felling and pesticide application and will use these skills in the project.

Local historians, ecologists and the general public will collaborate to generate a statement of significance for the site plus an interpretation manual for leaders of walks and other educational activities. Boards, leaflets and a nature trail will describe the work and alert visitors to plants and animals to look out for.

2c What are the aims of your project?

Tell us about the specific aims of your project. Your aims should relate to your heritage and also to the people involved.

Remember to make sure that they also relate to our 'learning' aim and either one or both to our aims of 'conservation' and 'participation'.

Aims

1. Restore 1.5 hectares of Bluebell Heath to the state it was in in the early 19th century, with a rich mix of heathland/acid grassland flora and accompanying fauna.
2. Train volunteers in ecological and horticultural skills that will be useful both on the nature reserve and in equipping them for a career.
3. Generate archives, both virtual and concrete, than will be used by interested parties to inform planning decisions and to educate the public for many years to come.
4. Educate and entertain the public with guided walks, nature trails, interpretive signs and exhibitions to reveal the richness of historical and ecological heritage within their own borough.
5. Recruit volunteers to maintain the site, including wardens to take responsibility for its management over the subsequent years.

If we award you a grant, before we pay the final 10% of the grant we will ask you to fully evaluate (assess) how well your project has met its aims.

2d Provide a detailed project plan

Describe your project as fully as you can.

We suggest you work through a draft version of the project plan table and share it with colleagues and partners before you fill in the detailed project plan.

When filled in, the table should give you and your colleagues a realistic project plan. However, we understand that the plan is likely to change and improve as your project develops.

Remember that the activities within your project should help you to meet our aims relating to 'learning', 'conservation' and 'participation'. We have a selection of guidance notes on heritage topics and activities to help you and have identified the relevant ones below.

All projects must meet our 'learning' aim.

Opportunities to learn about the heritage could include:

Providing information through displays, leaflets or a website.

Providing opportunities for people to be trained in new skills.

Holding open days, tours or practical sessions.

You will find it useful to read *First steps in learning*.

For projects meeting our 'conservation' aim.

Opportunities to preserve and protect the heritage could include:

Surveys and research to help people understand the heritage better.

Repairing a building or monument.

Carrying out conservation work to a heritage item, archive or collection.

Providing training in conservation skills as part of the project.

You will find it useful to read *First steps in conservation*.

For projects meeting our 'participation' aim.

Opportunities for people to take part in your project could include:

Developing a volunteer programme.

Holding activities for specific audiences that are not currently involved with your heritage.

Setting up a new group to allow a wider range of people to make decisions about your heritage (for example, a community advisory group or a youth forum).

You will find it useful to read *First steps in participation*.

See example project plans on our website for ideas on how to fill in this table. These show roughly how much information you need to provide, in proportion to the size of the grant you are asking for.

A large, empty rectangular box with a thin black border, occupying the majority of the page. It is intended for the applicant to provide details about their heritage application.

What?	When?	Where?	Who will carry out the activity?	Who is the activity for?	What will you achieve?
1. Alert the public to the project and to the educational opportunities offered within it.	Start: May 2012 End: September 2012	We will place a story in the Harrow Observer (which regularly carries articles on our activities) and in the Harrow Times and Watford Observer. We will display a single poster panel at the Harrow Museum. An article on the project will be placed on the Harrow Nature Conservation Forum website. Our followers will be alerted by Twitter.	Elliot Bertram, Publicity Officer of the Harrow Nature Conservation Forum. Stephen Bolsover, project leader.	(Section 2c: aims 2, 4 and 5) The activity is aimed at recruiting interested members of the public for the guided walks, as well as recruiting new volunteers from the Harrow community, including those who would benefit from the training available.	We expect to have between 20 and 30 members of the public on each of our guided walks (five in each of the three years of the project). In this activity we expect to recruit 20 volunteers, 10 strongly committed who will attend many working parties some of whom will be formally trained, and 10 peripheral volunteers who will attend a few working parties.
2. Photograph all our activities on Bluebell Heath: seed collection, tree clearance, seed sowing, re-establishment of heathland/acid grassland.	Start: May 2012 End: April 2015	Bluebell Heath, Stanmore Common	Project leader; voluntary wardens; members of the public	(Section 2c: aim 4) Members of the public	Photographs will be used in reports, press releases and both as prints on displays and in digital picture frames in the close of project exhibition at Harrow Museum (activity #20). Harrow Museum is visited by ~10,000 members of the public over a three month period.

What?	When?	Where?	Who will carry out the activity?	Who is the activity for?	What will you achieve?
3. Design, print and erect two interpretive panels to explain the ongoing work to the public.	Start: May 2012 End: April 2015 The panels will be removed at the end of the project period.	Entrances to Bluebell Heath	Design by the educational materials steering group. Printing by contractor. Erection by the project leader and members of Harrow Nature Conservation Forum	(Section 2c: aims 4 and 5) Members of the general public	The boards will set out the aims of the project and the timescale of the work. They will be seen by about one thousand visitors to Stanmore Common over the course of the three years. Contact details on the panels will help recruit volunteers.
4. Generate a statement of significance for the site.	Begin: May 2012 End: December 2012 although the document will remain online and open for editing and correction	On line/project leader's home office. The document will be published on the Harrow Nature Conservation Forum web site.	Harrow Nature Conservation Forum; Harrow Heritage Trust (providing expertise in local history); Harrow Natural History Society; London Heathland/Acid Grassland group; Interested members of the general public	(Section 2c: aim 3) The project team and all future groups and individuals with an interest in Stanmore Common. The statement of significance will describe the site and in particular the characteristics that make it special and worthy of protection and careful maintenance. Generation of the statement will act to share information between the organizations creating it, and once generated the statement will be used by the planning departments of Harrow and Hertsmere Councils, and by all volunteer organizations that interact with the site in future.	The statement of significance will describe the site and in particular the characteristics that make it special and worthy of protection and careful maintenance. Generation of the statement will act to share information between the organizations creating it, and once generated the statement will be used by the planning departments of Harrow and Hertsmere Councils, and by all volunteer organizations that interact with the site in future.

What?	When?	Where?	Who will carry out the activity?	Who is the activity for?	What will you achieve?
5. Guided walks over Stanmore Common concentrating on Bluebell Heath. We currently lead five guided walks per year over Stanmore Common and expect to continue indefinitely.	Start: May 2012 We will continue this activity indefinitely	Stanmore Common	Harrow Nature Conservation Forum	(Section 2c: aims 4 and 5) General public	Over the project period we expect that guided walks will be attended by about 400 members of the public. These will learn about the very special geology, history and natural history of Stanmore Common and Bluebell Heath in particular. Use of the object collection (activity #16) will make the walks interesting to children and improve the educational outcome. The walks will help to recruit volunteers for our ongoing activities.
6. Update and reprint the existing Harrow Nature Conservation Forum leaflet on Stanmore Common	First update, describing the ongoing work: Start: May 2012 End: June 2012. Second update, describing Bluebell Heath in its restored state: Start: December 2014 End: April 2015	On line/project leader's home office	Research and design: educational materials steering group. Printing: commercial printers.	(Section 2c: aims 4 and 5) General public	Our standard runs are 500 leaflets, which are distributed in libraries, at the Harrow Civic Centre, and at our stand at fairs. One run of 500 lasts about a year, so we expect to reach at least 1,500 families with these leaflets, explaining the geology, history and natural history of Stanmore Common including Bluebell Heath. The leaflets will help to recruit volunteers for our ongoing activities.

What?	When?	Where?	Who will carry out the activity?	Who is the activity for?	What will you achieve?
7. Collect seeds from the relict areas of acid grassland on Stanmore Common	Start: June 2012 End: September 2012	Stanmore Common	Volunteers: those specifically recruited for this project, corporate workday volunteers, and British Trust for Conservation Volunteers	(Section 2c: aim 1) The activity is a component of the restoration of the heathland/acid grassland habitat of Bluebell Heath. The primary beneficiary is biodiversity; human visitors will appreciate the open, flower-rich wild area.	Once the seeds are planted the plant species now present in the relict areas of acid grassland will become established on the 1.5 ha of newly cleared area.
8. Training of five volunteers in plant surveying	June 2011	Veolia Water Environment and Education Centre, Clay Lane, Bushey, located only 600 metres from Bluebell Heath, and on site at Stanmore Common	John Dobson of Make Natural Ltd, the ecologist who carried out the recent botanical survey of Stanmore Common (available for download from the Harrow Nature Conservation Forum website).	(Section 2c: aims 2 and 5) Volunteers who wish to gain expertise in plant surveying, either as part of professional training or as interested amateurs	Five volunteers will become proficient in botanical surveying and in recognizing the species present on Stanmore Common. This work will be a strong component of a CV for students applying for further education courses in land management or ecology. The volunteers will use these skills in the project (Activity #9).

What?	When?	Where?	Who will carry out the activity?	Who is the activity for?	What will you achieve?
<p>9. Carry out botanical surveys of Bluebell Heath before the clearance work is done and in the subsequent two years including final evaluation of site status.</p>	<p>Start: June 2012 End: April 2015</p>	<p>Bluebell Heath, Stanmore Common</p>	<p>The five trained volunteers (see activity #8)</p>	<p>(Section 2c: aims 1 and 3) Project leaders; the general public; the five trained volunteers</p>	<p>The initial survey will complement the existing survey by Make Natural Ltd. giving details of the plants found at present on the site. Surveys immediately after and in the years following the clearance will allow us to judge how well restoration of heathland/acid grassland is proceeding on the cleared areas allowing the management to be varied (e.g., by resowing if the initial sowing has failed; Asulox spraying if bracken is becoming overdominant). Knowledge of the common or prominent plants will allow us to design the leaflets and nature trail, while presence of rare or local plants will be noted in the interpretation manual so that guided walk leaders can point them out. Surveying will show the volunteers how their skills can be useful in a real ecology project.</p>

What?	When?	Where?	Who will carry out the activity?	Who is the activity for?	What will you achieve?
10. Training of two volunteers in pesticide use to NPTC accreditation	The course takes three days, with a further one day for NPTC assessment. Capel Manor runs the course approximately once per month. The volunteers will take the course at a date of their choosing in 2012.	Capel Manor College, Bullsmoor Lane, Enfield	Capel Manor College, Bullsmoor Lane, Enfield	(Section 2c: aims 2 and 5) Volunteers who wish to gain expertise in pesticide use	Two volunteers will become proficient in the safe use of pesticides. This qualification will be very useful to young people hoping to follow a career in gardening, farming or horticulture. The volunteers will use these skills in the project (activity #17).
11. Training of one volunteer in chainsaw maintenance and felling of small trees to NPTC accreditation	The course takes five days, with a further one day for NPTC assessment. Capel Manor runs the course approximately once per month. The volunteer will take the course at a date of their choosing in the period June-September 2011.	Capel Manor College, Bullsmoor Lane, Enfield	Capel Manor College, Bullsmoor Lane, Enfield	(Section 2c: aims 2 and 5) A volunteer who wishes to gain expertise in chainsaw use	The volunteer will become proficient the safe use of a chainsaw. This qualification will be very useful to a young person hoping to follow a career in tree surgery. The volunteer will use these skills in the project (activity #13).
12. Clear secondary woodland from 1.5 hectares of Bluebell Heath, scraping leaf litter from the 0.5 hectares that have been established as woodland for the longest time (~ 30 years).	Start: September 2012 End: November 2012	Bluebell Heath, Stanmore Common	Contractors. We have discussed the project with two contractors, prices quoted in section 4a are the lower of the two quotes. If funded we will obtain at least one more quotation.	(Section 2c: aim 1) The activity is a component of the restoration of the heathland/acid grassland habitat of Bluebell Heath. The primary beneficiary is biodiversity; human visitors will appreciate the open, flower-rich wild area.	Following the clearance a continuous 3.1 hectare space will be clear, comprising: Clear at present: Glades within Bluebell Heath: 1 ha. New Heath: 0.6 ha. Cleared in this project: 1 ha of recent secondary woodland separating glades within Bluebell Heath plus 0.5 ha of older secondary woodland lying between the westernmost glade in Bluebell Heath and New Heath.

What?	When?	Where?	Who will carry out the activity?	Who is the activity for?	What will you achieve?
13. Fell and remove trees by hand.	December 2012	A small area (~ 100 square metres) that forms a flush of wet ground directing ground water to an area where Heath Spotted Orchid (a Harrow BAP priority species) grow.	The volunteer trained to safely use a chainsaw.	(Section 2c: aim 1) The primary beneficiary is the natural environment. The general public also benefits.	The small flush (~ 100 square metres) will be cleared of trees without the compaction of the soil and resulting damage to groundwater movement that would be caused by vehicles.
14. Sow seeds collected from the relict grassland areas onto the newly cleared areas	Start: September 2012 End: December 2012	Bluebell Heath, Stanmore Common	Young volunteers from the Chinmaya Foundation and Kol Chai Reform Jewish Community	(Section 2c: aim 1) The activity is a component of the restoration of the heathland/acid grassland habitat of Bluebell Heath. The primary beneficiary is biodiversity; human visitors will appreciate the open, flower-rich wild area. The young volunteers will gain a real sense of having helped the environment. New Heath, sown by Chinmaya in 2009, is present as an example of what can be achieved.	The plant species now present in the relict areas of acid grassland will become established on the 1.5 ha of newly cleared area and establish themselves over the remaining 2½ years of the project.

What?	When?	Where?	Who will carry out the activity?	Who is the activity for?	What will you achieve?
15. Evaluate project	Ongoing, beginning April 2012	Botanical and invertebrate surveys on site; feedback after guided walks on Stanmore Common; on line surveys; survey forms at Harrow Museum	Evaluation steering group; voluntary wardens of Stanmore Common, especially John Dobson for invertebrate surveys; the five volunteers trained in botanical surveying; walk guides for public feedback.	The botanical and invertebrate survey evaluation is aimed at adjusting the physical activity to optimize the restoration process. Voluntary organizations including ourselves. General public	Everyone involved in the project will contribute to an online project diary (blog) which will document the impact of the project on the site and all interactions with the public and volunteers. Evaluation forms as part of guided walks, together with follow-up surveys, will assess the success of the project in making the public aware of the geology and natural history of Stanmore Common, of the recreational opportunities it provides, and the responsibilities of visitors in preserving this resource. A redacted version of the diary (removing, for example, any commercially sensitive material relating to the contractors) will be published on our web site as the project proceeds and a full summary will be printed for those archives that need a paper copy.

What?	When?	Where?	Who will carry out the activity?	Who is the activity for?	What will you achieve?
16. Generate an interpretation manual and a collection of objects for the site (samples of Pleistocene gravel, pressed flowers, mammal skulls, shed snake skins, artificial painted bird eggs, preserved insects, replica of the type of pistol Dick Turpin would have used...).	Begin: January 2013 End: April 2015 although the document and collection will remain open for editing, correction and addition	Interpretation manual: On line/project leader's home office. The document will be published on the Harrow Nature Conservation Forum web site. Object collection: with team leader, but loaned to Harrow museum and schools as required	Educational materials steering group; Harrow Natural History Society	(Section 2c: aim 3) The manual and collection will be used by the leaders of guided walks and other educational activities	Making knowledge available to all leaders of guided walks and other educators will make the guided walks more interesting and provide a depth of knowledge beyond the expertise of one person or even one group. In turn guided walks will be attended by about 400 members of the public during the tenure of the project and by about 150 in all subsequent years while the object collection will be used at the Harrow Nature Conservation Forum stall at fairs and will be seen by about one thousand members of the public over the tenure of the project.
17. Spraying bracken with Asulox or a suitable alternative	During the tenure of this project, we will spray during August 2013 and August 2014. Continuation of the treatment beyond the tenure of this project may well be necessary (and will be funded by the Harrow Heritage Trust).	Bluebell Heath, Stanmore Common	The two trained volunteers (see activity #10)	(Section 2c: aim 1) The primary beneficiary is the natural environment. The general public also benefits.	The primary aim is the preservation of biodiversity in an area of ~ 1 hectare by the suppression of bracken that would otherwise dominate and suppress other plants. The public will also benefit because a better mix of flowering herbs will be maintained on the site.

What?	When?	Where?	Who will carry out the activity?	Who is the activity for?	What will you achieve?
18. Design and create a nature trail within Stanmore Common with numbered posts on the ground and a leaflet describing the geology, plants and animals to be seen at specific locations. The trail will have start points at the car park and the bus stop on the A4140 "The Common", and lead visitors through the common with special emphasis on Bluebell Heath and the heathland/acid grassland community.	Start: December 2013 End: September 2014	Project leader's home office. Stanmore Common. Activation of the trail will be advertised in local media and on our web site. There will be a formal opening in September 2014 by a local dignitary, probably the Mayor of Harrow.	Educational materials steering group; Harrow Natural History Society	(Section 2c: aims 4 and 5) General public. A number of members of the public and of the Harrow Natural History Society have told us that they get lost in Stanmore Common and that this detracts from their enjoyment of the site.	Discrete numbered posts on the ground will guide visitors through Stanmore Common and over the Bluebell Heath site without detracting from the open, wild experience for those who would rather explore on their own terms. We expect to print and distribute 1000 copies of the leaflet in the project period, hence reaching 1000 families.
19. Design, print and erect one interpretive panel describing the heathland/acid grassland habitat and the plants and animals that visitors are likely to see.	Start: September 2014 End: April 2015	Stanmore Common car park on Warren Lane, Stanmore	Design by Educational materials steering group. Printing by contractor. Erection by the project leader and members of Harrow Nature Conservation Forum	(Section 2c: aims 4 and 5) Members of the general public	By locating the board at the car park we keep Bluebell Heath itself free of obtrusive signage, allowing visitors to appreciate it as it would have looked in the early 19th century. The board will describe the heathland/acid grassland habitat and the plants and animals that visitors are likely to see. They will be seen by about three thousand visitors to Stanmore Common over the course of the three years. Contact details on the panels will help recruit volunteers.

What?	When?	Where?	Who will carry out the activity?	Who is the activity for?	What will you achieve?
<p>20. Create a display comprising two sets of ~ 5 pull-up panels plus a display case of material (digital picture frame showing images and text, plus samples of Pleistocene gravel, pressed flowers, mammal skulls, shed snake skins, artificial painted bird eggs, preserved insects, replica of flintlock pistol as used by Dick Turpin...) with accompanying text and images promoting Stanmore Common, describing the long history of the site, and describing the rich variety of plants and wildlife.</p>	<p>Start: December 2014 End: April 2015</p>	<p>The complete display will be first exhibited at the Harrow Museum. The pull-up panels will then tour a variety of local venues including leisure centres, libraries and faith centres (two of which are located on Wood Lane very close to the site).</p>	<p>Design by educational materials steering group. Printing by contractors.</p>	<p>(Section 2c: aims 4 and 5) General public</p>	<p>The display will be seen by the ~10,000 members of the public who visit the Harrow Museum over a three month period, and then by many more as it tours other venues. The exhibition will reach members of the public who do not spontaneously visit the open spaces including the disabled. These will be made aware of the geology, history and natural history of Stanmore Common including Bluebell Heath. From this exhibition In this activity we expect to recruit 20 volunteers, 10 strongly committed who will attend many working parties some of whom will become assistant wardens of the site, and 10 peripheral volunteers who will attend a few working parties.</p>

2e How did you get the idea for your project? Tell us what other options you considered and how you know there is a need or demand (or both) for your project.

The need to reverse the steady loss of the open spaces on Stanmore Common has been clear for many years. Local people have complained that "Something must be done" while experts including the Heathland/Acid Grassland group of the London Biodiversity Partnership, and the consortium generating the Harrow Biodiversity Action Plan, have named this as a priority. However, with no funds little has been done. Our volunteer working parties have cleared small areas (see photographic evidence) but these are tiny compared with what needs to be done to join the isolated glades and reinstate the complete sweep from the easternmost glade to New Heath on the west. One area that we cleared is now dominated by bracken, demonstrating that without active management bracken will dominate the whole area, suppressing and possibly eliminating the complex pattern of heathland/acid grassland and associated invertebrates.

2f What steps have you taken to make sure you have involved the community? Tell us if you have done any consultation or made efforts to invite the community to take part.

A waterproof box at the Stanmore Common car park contains leaflets describing the project and soliciting comments and involvement.

Our web site describes the project. Local residents and experts from elsewhere have been alerted by Twitter and asked to comment.

A report has appeared in the local paper, the Harrow Observer.

We distributed leaflets describing the project and soliciting comments and involvement at local fairs.

The London Biodiversity Partnership Heathland/Acid Grassland group visited the site on 24th August 2011 and discussed the plans.

We gave a presentation on the project to the Harrow Natural History Society on 10th October 2011.

We have spoken to visitors to Stanmore Common, handed out leaflets, and requested feedback and involvement.

Our newsletter, distributed to 83 local residents, has an article on the project and requests feedback and involvement.

All feedback so far has been positive. When the work begins members of the public may be concerned when they see trees being felled, but the information panels, and the fact that we can point to New Heath as an example of what can be achieved, gives us confidence that these worries can be addressed.

2g What will happen to your heritage if you do not get a grant from us?

Mechanical cutting by Harrow Council contractors will keep the existing areas of Bluebell Heath open. However even here bracken will smother the complex ecosystem of heather and acid grassland herbs leading to a depleted biodiversity and likely causing the loss of the rare invertebrates found on the site. A second danger to the invertebrates and indeed to many of the plants is that the remaining glades are small and isolated and therefore numbers of individual organisms in any one population are low. Random fluctuation in numbers will therefore cause local extinction; the longer the glades remain isolated the greater the chance of loss of that species from the entire site.

The seedbank that at present exists in the soil under the recent secondary woodland will decline in quality, with only those species whose seeds are particularly long lived persisting. This will make eventual restoration of the heathland/acid grassland more difficult and less representative of the complete ecosystem present in the 19th century.

2h Which main groups of people will benefit from your project?

We need to understand the range of audiences that you are planning to attract with your project. We use this information to assess your plans for your project - we do not prioritise projects for any particular group. We also use the information to report on the benefits of our funding and to help decide what action we will take over come barriers to involving people with heritage.

If your project will specifically benefit a particular group or groups of people, tell us which groups by ticking all relevant boxes below.

If your project aims to benefit a wide range of people and is not specifically targeted at any particular group, tick this box only.

✓

Section Three - Project Delivery

3a When will your project start and finish?

You should aim to finish your project within three years (it must be fully complete within five years).

Your timetable should allow 10 weeks for us to assess your application.

Begin: 1st May 2012

End: 30th April 2015

3b How will you manage your project? Tell us about the skills and experience of the person who will lead your project and the people in the project team.

Stephen Bolsover, volunteer project leader, has long experience in academic biology as Professor of Cell Physiology at University College London, managing many research grants. He is a fellow of the Society of Biology and Trustee of the Physiological Society (annual budget £4 million) as well as of the Harrow Heritage Trust. He has been chairman of the Harrow Nature Conservation Forum since 2006, combining physical work on the sites with management. He was responsible for the text and artwork in our leaflets (see photographic evidence and PDFs on our website) and in two information panels (photographic evidence). He maintains the Forum's website at <www.harrownfc.org>.

Steve has no plans to retire from the Forum during the tenure of this project. However other members of the Forum would step in if necessary. In particular, the wardens of Stanmore Common Simon Braidman, David Bailey and John Dobson will be closely involved with all aspects of the project and fully able to carry it on alone. Simon is a professional nature warden at Cranford Park, Hillingdon as well as chief voluntary warden at Stanmore Common. John Dobson is the professional ecologist responsible for the 2010 botanical survey of the Common (downloadable from the Harrow Nature Conservation Forum website).

Robin Youle qualified as a Chartered Accountant in 1961 and has acted as Honorary Treasurer of the Harrow Heritage Trust for about 15 years.

Denis Vickers, Harrow Council Biodiversity Officer, has a BSc (Hons) in Ecology. He is a member of the Institute of Ecology and Environmental Management, a Chartered Biologist, and a Fellow of the Linnean Society.

Steven Gregory is Harrow Council's Heritage Services Manager and has long experience of making learning about heritage exciting and fun.

3c What outside advice have you received or will you receive to help you manage your project?

Denis Vickers, Harrow Council Biodiversity Officer, will supervise and advise on all aspects of the restoration work. He will sit on the project steering committee and contribute to the statement of significance and educational material.

We have discussed the project with the Harrow Natural History Society, which has unparalleled knowledge of the plants and animals of the Harrow area. They will give close support and will help generate the Statement of Significance and nature trail. The heathland/acid grassland group of the London Biodiversity Partnership has already visited the site and will liaise with us as the project proceeds.

Steven Gregory, heritage services manager at the Harrow Museum, will aid us in publicity and public contact aspects of the project. In particular he and the museum will:

Provide space and act as a consultant and facilitator at the Harrow Museum for displays (project plan items 1 and 20).

Advise as part of the steering group on generation of a statement of significance for the site (project plan item 4).

Act as an advisor as part of the steering group to develop appropriate evaluation processes to identify successful learning outcomes (project plan item 16).

Evaluate the educational aspect of the project (project plan item 15).

Harrow Council's Communication Department will be used to communicate opportunities and advertise events, e.g. through the free newsletter "Harrow People" and the monthly e-newsletter.

3d What will happen to things that your project has produced (for example, an exhibition or a spoken record of history) after the funding ends?

The main legacy of the project will be Bluebell Heath itself as a continuous open space of heathland and acid grassland. The area will be maintained in this state by annual mowing by Harrow Council contractors (see letter from David Corby, Public Realm manager).

Botanical survey data (project plan item 9) will be submitted to the Green Spaces Information for Greater London (GIGL) database and will also be added to the database on the Forum website, which at present contains over 4000 records.

The statement of significance, interpretation manual and object collection (project plan items 4 and 16) will remain as a resource for educators and other interested parties.

The nature trail (project plan item 18) will remain to guide visitors through Stanmore Common and over the Bluebell Heath site.

The interpretive panel erected at the Stanmore Common car park (project plan item 19) will remain to explain the heathland/acid grassland habitat and the plants and animals that visitors are likely to see.

The leaflet on Stanmore Common (project plan item 6) will be reprinted by the Forum as necessary, as are all our leaflets.

3e Does your project involve conservation of an item, land of property?

Yes

How you will maintain it so that people can continue to experience and enjoy it?

You may find it useful to read [First steps in conservation](#).

A revised management plan for Stanmore Common including Bluebell Heath will be generated by the Forum in collaboration with Denis Vickers, Harrow Council's biodiversity officer, and the Harrow Natural History Society.

Bluebell Heath will be maintained as a continuous open space of heathland and acid grassland by annual mowing by Harrow Council contractors (see letter from David Corby, Public Realm manager).

Small scale, more directed management will be performed by the voluntary warden team. This will include regular coppicing of shrubs at the edges of the open space to create and maintain a complex, graded margin. Individual trees will be felled to create an edge of complex footprint that includes sheltered bays (sun traps) that are ideal for, for example, grass snake basking.

The voluntary wardens regularly collect rubbish from all over Stanmore Common and remove it to the bins at the Warren Lane car park. They will continue to do so.

Section Four - Project Costs

4a Project costs

For all project costs, we ask you to get at least three quotes for work or items of £10,000 or above.

Please use the 'Description' column to describe your costs in more detail. You can add extra lines.

You should ask HM Revenue & Customs (www.hmrc.gov.uk) to check how much value added tax (VAT) you will be able to claim back. If you underestimate costs for VAT, you will have to pay the extra costs.

The notes contained here explain more about the information we are asking for in the cost table.

Costheading	Description	Cost £	VAT £	Total Cost £
New staff				
Professional fees	Installation of displays by Harrow Museum staff - 4 hours charged at £25 per hour	£100	£20	£120
Professional fees	Consultancy fees for Heritage Services Manager, Harrow Council (payable to Harrow Museum) 4 hours at £25 per hour, see letter from Steven Gregory	£100	£20	£120
Recruitment	One quarter page advertisement in Harrow Observer to alert readers to the project, invite volunteers, and explain the training available to volunteers.	£168	£34	£202
Mentor				
Purchase price of heritage items				
Repair and conservation work	Clearance of up to 1/2 ha of trees, to include felling, burning brash, stacking of round timber, stump removal, some to burn others to stack. The scraping of topsoil to approximately 150mm as discussed on site, topsoil left in bunds. Collection and application of heather seed to cover this 1/2ha. Clearance of young secondary woodland from a further 1 ha to include cutting down, burning/stacking, stump grinding etc. but no topsoil removal or seed sowing.	£25,000	£5,000	£30,000
New building work				
Equipment and materials	Knapsack sprayer (for Asulox)	£40	£8	£48
Equipment and materials	Protective clothing for Asulox spraying	£90	£18	£108
Equipment and materials	Chainsaw maintenance and spares	£50	£10	£60
Equipment and materials	Buckets for seed collection by volunteers	£40	£8	£48
Equipment and materials	Equipment for botanical surveys	£75	£15	£90
Training for staff				
Training for volunteers	2 x pesticide course at Capel Manor at £450 per student including VAT	£750	£150	£900
Training for volunteers	Chain saw course at Capel Manor for one student at £885 including VAT	£737	£148	£885
Training for volunteers	Surveying course by Make Natural Limited	£1,084	£217	£1,301
Training for volunteers	Classroom space for surveying course at Veolia Water educational facility: five half days at £35 per day	£175	£35	£210
Travel for staff				

Costheading	Description	Cost £	VAT £	Total Cost £
Travel for volunteers	Travel to Capel Manor for pesticide course: 2 students, 4 days, zone 1-6 travelcard at £15	£120		£120
Travel for volunteers	Travel to Capel Manor for chainsaw course: 1 student, 6 days, zone 1-6 travelcard at £15	£90		£90
Travel for volunteers	Bus travel to site for volunteers – 50 trips at £2.20 per trip	£110		£110
Expenses for volunteers	Snacks and drinks for young volunteers during working parties	£150	£30	£180
Cost of producing learning materials	Print two interpretive panels for Bluebell Heath, plus posts and other hardware	£350	£70	£420
Cost of producing learning materials	Print final interpretive sign for car park, plus posts and other hardware	£180	£36	£216
Cost of producing learning materials	Print 1500 copies of Stanmore Common leaflet	£414	£83	£497
Cost of producing learning materials	Posts and numbers for nature trail	£200	£40	£240
Cost of producing learning materials	Print 1000 copies of Nature Trail leaflet	£276	£55	£331
Cost of producing learning materials	Full view clear plastic artefact boxes for object collection: 10 each of 4 sizes	£163	£33	£196
Cost of producing learning materials	Plastazote mounting material for display boxes in object collection, plus plastazote cutter	£61	£12	£73
Cost of producing learning materials	Five padded shoulder bags for guided walk leaders to hold and carry object collection	£125	£25	£150
Cost of producing learning materials	Printing and producing 10 pull-up screens for exhibition in Harrow Museum, then to travel to various locations in Harrow	£560	£112	£672
Cost of producing learning materials	12" digital picture frame for display at Harrow Museum and other locations	£110	£22	£132
Cost of producing learning materials	Replica flintlock pistol for object collection to illustrate how Stanmore Common was a haunt of the notorious highwayman Dick Turpin	£70	£14	£84
Publicity and promotion	Printing flyers to advertise Nature Trail opening event	£180	£36	£216
Publicity and promotion	Web marketing - payment for appearance and links from commercial web sites	£200	£40	£240
Publicity and promotion	One quarter page advertisement in Harrow Observer to advertise Nature Trail opening event.	£168	£34	£202
Evaluation	Printing of evaluation report (a full summary of the on-line version)	£20	£4	£24
Overheads				
Other				
Contingency	To cover unexpected costs; for example, discovery of a rare invertebrate would require generation and implementation of a specific management plan and likely require retimetabling of contractor operations	£3,200		£3,200
Inflation	Calculated for Asulox and printing costs to occur in years 2 and 3	£40	£8	£48
Cost Totals		£35,196	£6,337	£41,533

4b Project income

If you can provide cash contributions, however small, please do so.

List all the cash contributions, including those you have received from outside sources and say if they are secure (in other words, are guaranteed to be paid). If they are not secure, say when you will hear a decision.

We accept cash funding from any public, charitable or private source.

We cannot accept another Lottery grant from any other organisation as cash funding.

Income	Description	Total
Cash	Contribution from Harrow Heritage Trust	£3,000
Cash	Contribution from Dr. Ronald Cormack, a member of the public (see letter of support #6)	£100
HLF grant requested		£38,400
Total Income		£41,500

4c Summary Project costs and income

Total project costs	£41,533
Total project income	£41,500
Total HLF grant requested	£38,400
HLF grant requested percentage	92

4d Are there any non-cash contributions or volunteer time to help carry out your project?

We encourage and welcome non-cash contributions and volunteer time, whether or not you are able to offer cash contributions. This helps to show your commitment to your project.

We need to see a financial value for each of these contributions to help us assess the amount and range of support for your project. We can provide a worked example of this table if you need one.

Non cash contributions

Non-cash contributions can be things you need for your project that you do not have to pay for - for example, the use of a room in a local college for regular meetings or materials being donated by a local building firm.

Description	Total
Use of toilets at Stanmore Cricket Ground (adjacent to Stanmore Common) for a total of 10 days, during volunteer work days by large groups	£200
Total Value	£200

Volunteer time

We welcome time volunteers give to your project without being paid for their work. By this, we mean the time people are contributing to the project rather than taking part in it. You should use the following rates to work out the financial value of the time volunteers contribute.

Professional labour (for example - accountancy or teaching) - £350 a day

Skilled labour (for example - administrative work, carpentry or leading a guided walk - £150 a day

Unskilled labour (for example, clearing a site or working as a steward at an event) - £50 a day

Description	Days	Cost	Estimated value
Project management by project leader, including design and artwork of leaflets and information boards	150	£150	£22,500

Description	Days	Cost	Estimated value
Generation of statement of significance (project plan item 4)	5	£150	£750
Seed collection (project plan item 7)	5	£50	£250
Seed sowing (project plan item 14)	19	£50	£950
Botanical surveys (project plan item 9)	38	£150	£5,700
Bracken spraying (project plan item 17)	3	£150	£450
Tree felling (project plan item 13)	2	£150	£300
Second volunteer to be present during tree felling (project plan item 13) (necessary safety requirement)	2	£50	£100
Generation of interpretation manual (project plan item 16)	5	£150	£750
Evaluation of project (project plan item 15)	20	£150	£3,000
Guiding of walks (project plan item 5)	6	£150	£900
Design of nature trail including leaflet (project plan item 18)	12	£150	£1,800
Total Volunteer	267		£37,450

Additional Information

Information about your organisation

This part of the form aims to collect the information we need to report on funding. We will not use this information to assess your application.

If your organisation will specifically benefit a particular group or groups of people, tell us which groups by ticking all relevant boxes below.

If your organisation represents a wide range of people and does not specifically represent any particular group, tick this box only.

✓

Attachments

Documents you must send with your application

If you will be sending documents to us as a hard copy, send them with your signed declaration and number them as numbered below.

Please tell us using the drop downs how you will send the supporting documents.

1. Copy of your organisation's constitution (formal rules), unless you are a public organisation. This must include: a) The name and aims of your organisation. b) A statement which prevents your organisation from distributing income or property to its members during its lifetime. c) A statement which confirms that if your organisation is wound up or dissolves, the organisation's assets will be distributed to another charitable or not-for-profit organisation and not to the organisation's members. d) The date when the constitution was adopted. e) The signature of your chairperson (or other suitable person). If you have sent a copy of your constitution with a previous grant application (not before April 2008) and no changes have been made to it, you do not need to send it again.

Electronic

2. For joint applications - a copy of your partnership agreement signed by everyone involved which sets out how the project will be managed.

Does not apply

3. A copy of your organisation's accounts for the last financial year

Electronic

4. Copies of deeds, leases, mortgages or other proof of ownership if your project involves work to land, buildings or heritage items

Electronic

5. A small selection of visual aids that you consider will help illustrate your project, for example, drawings and photographs

Electronic

6. Letters of support (no more than six) from other organisations that set out their specific contribution to your project, the specific value of the project to the community or reasons why they have a need to see your project go ahead. They should not be general letters of support.

Electronic

7. Job descriptions for any new staff positions that are included in your grant request.

Does not apply

8. A project management structure

Electronic

Declaration

Freedom of information

We have a duty to keep to the Freedom of Information Act 2000 and the

Freedom of Information (Scotland) Act 2002 in Scotland. When you sign the declaration at the end of the application form, you are confirming that you have no objection to us releasing sections 2 to 3 of this form to anyone who asks to see them (this does not include any supporting documents). If there is any information in sections 2 to 3 of the form that you don't want made publicly available, please say this in the space provided and explain your reasons. We will take these into account when we respond to any request for access to those sections. Otherwise, we will release sections 2 to 3 to the public if asked. We may also be asked to release other information contained elsewhere in the form and we will respond to these requests after taking account of your rights and expectations under the Freedom of Information Act 2000 and Data Protection Act 1998 and the Freedom of Information (Scotland) Act 2002 in Scotland. In those cases, we will always consult you first.

Terms of Grant

You must read the standard terms of grant that apply to all our grant awards in this grant programme. These can be read on our website. By signing the declaration below, you are confirming, on behalf of the organisation that you represent, that you accept these terms, unless we choose to draft a contract which is specifically adapted for your project.

The requirements in *Managing your grant* form part of the terms of any grant awards that we may make. We consider breaking the conditions of *Managing your grant* as breaking the terms of the grant.

If work begins on the project before we award a grant and before we have agreed that work can start, we may withdraw our grant.

We may also withdraw our grant if work has not started within a year of the letter awarding you the grant.

The terms of grant will last for 10 years unless your project includes buying buildings, land or a heritage item (no matter how much you have applied for) in which case the terms of grant will last for 80 years.

Declaration

Please be aware that you are making this application at your own risk and we cannot be responsible to anybody for any loss, damage or costs arising directly or indirectly from this application.

I have read, understand and accept the notes that came with this application form. I understand and agree to you using and publishing the information in this application. I agree that you can check the information in it and any supporting documents with other people and organisations).

The project, and my organisation's role in it, falls within my organisation's powers and purposes. My organisation has the power to accept a grant, under your terms, and the power to pay back the grant if the terms are not being met.

I understand that any misleading statements (whether deliberate or accidental) I give at any point during the application process, or any information I knowingly withhold, could mean my organisation's application is not valid, in which case you will cancel the grant and claim back the money we have received, stop assessing and return the application, or withdraw any grant you offered my organisation.

The project has not yet started and will not do so until my organisation receives permission from you.

I accept that you may make the information contained in this form available to members of the public who ask to see it under the Freedom of Information Act 2000 and the Freedom of Information (Scotland) Act 2002 in Scotland. I understand that you will treat this information in line with the Data Protection Act 1998, the Freedom of Information Act 2000 and the Freedom of Information (Scotland) Act 2002 in Scotland, and that, unless I have said otherwise, you will make sections 2 and 3 of this form available to the public if you are asked to (this does not include any supporting documents). I understand that you will take account of any objection we make to you releasing the information contained in sections 2 and 3 or elsewhere in the form. I accept that you have responsibilities under the Data Protection Act 1998, the Freedom of Information Act 2000 and the Freedom of Information (Scotland) Act 2002 in Scotland (which may mean you have a duty to make the information available even if I have objected to this) and I agree that you will not be held responsible for any loss or damage we may suffer as a result of you meeting those responsibilities in line with the law.

I agree that any personal data supplied on this form (or otherwise) by my organisation will be used in accordance with the Data Protection Act 1998, and the Data Protection statement in the Introduction and Help Notes.

I am authorised to put forward this application on behalf of my organisation and to sign this declaration.

On behalf of my organisation, I agree that if we receive any grant from you for our project, we will keep to the standard terms of grant and any further terms and conditions set out in the grant notification letter.

We will take your signature (or signatures) on this form as confirmation that you:

Have understood we have legal responsibilities under the Data Protection Act 1998, the Freedom of Information Act 2000 and the Freedom of Information (Scotland) Act 2002 in Scotland.

Accept that we will not be responsible for any loss or damage you suffer as a result of us meeting these legal responsibilities.

The person signing this declaration must be different from the person named as the contact under question 1c and must have the authority to do so (for example, the chief executive, director, chairperson, vice chairperson, secretary or treasurer of your organisation).

If your project involves a partnership, the lead partner's authorised person should sign this on behalf of the partnership. If your project involves work to a building, piece of land or heritage item, the owner must also sign this Declaration if they are not the lead partner.

Signature:

Name (please print):

Job Title:

Name of Organisation:

Date:

CONSTITUTION OF THE HARROW HERITAGE TRUST

(Registered Charity No J072773)

Preamble

The purpose of this Constitution is to set up, and to regulate the affairs of, a new organisation to carry on the work of the Harrow Heritage Trust (Registered Charity No. 293906) founded in 1985 by the then Mayor of Harrow, Councillor Peter Pitt, and formally established by a Declaration of Trust dated the 13th January 1986.

1 TITLE

The Title of the organisation shall be the Harrow Heritage Trust ("The Trust").

2 OBJECTS & POWERS

2.1. The objects of the Trust shall be the same as those in the Declaration of Trust dated the 13th January 1986, namely: -

- (a) to secure the protection, preservation, restoration and improvement to the character and amenities of the London Borough of Harrow for the benefit and enjoyment of the public generally and especially the inhabitants of the Borough;
- (b) to promote the preservation of lands and buildings of beauty or historic interest and (as regards lands) of ecological or other scientific or environmental importance within the Borough and
- (c) to promote schemes and awards for protecting and improving the environment.

2.2 In furtherance of the said objects, but not further or otherwise, the Executive Committee of the Trust shall have the following powers: -

- (a) To raise funds and invite and receive contributions from any person or persons whatsoever by way of loan, subscription, donation and otherwise PROVIDED THAT the Trustees shall not undertake any trading activities in raising funds for the said objects.
- (b) To co-operate and collaborate with voluntary bodies and statutory authorities operating in similar charitable fields and to exchange information and advice.
- (c) To establish and operate both current accounts and deposit accounts with Bankers in the name of the Trust PROVIDED THAT cheques drawn on such accounts shall not be signed by less than one Trustee and by the Honorary Treasurer.
- (d) To purchase, take on lease or in exchange, hire or otherwise acquire any property and any rights and privileges necessary for the attainment of the said objects and to construct, maintain, and alter any buildings or erections so necessary as aforesaid.
- (e) To make regulations for the management of any property which may be acquired.
- (f) To sell, let, mortgage, dispose of or turn to account all or any of the property or assets of the Trust subject to such consents as are necessary by law.
- (g) To invest trust moneys not immediately required for the said objects in or upon such investments or securities or property as are authorised by the terms of this Deed.
- (h) To arrange and provide for or join in arranging and providing for the holding of exhibitions, meetings, lectures, seminars and training courses and the publication of books, pamphlets and related materials.
- (i) To do all such other lawful things as are necessary for the attainment of the said objects.

3 CUSTODIAN TRUSTEES

The Executive Committee shall cause the title to all land held by or in trust for the Trust and all investments held by or on behalf of the Trust to be vested in not less than three individuals appointed by them as Custodian Trustees. Custodian Trustees may be removed by the Executive Committee at their pleasure and shall act in accordance with the lawful directions of the Executive Committee. Provided they act only in accordance with the lawful directions of the Executive Committee, the Custodian Trustees shall not be liable for the acts and defaults of its members.

4 MEMBERSHIP

4.1 Membership of the Trust shall consist of:

- (a) Representatives of the Corporation of the London Borough (see clause 4.2);
- (b) Representatives from each affiliated organisation (see clause 4.3);
- (c) Individual Members (see clause 4.4);
- (d) Corporate Members (see clause 4.5).

4.2 LOCAL AUTHORITY MEMBERS

The Corporation shall be entitled to appoint 5 representatives being the Mayor and four other Members of the Council of the London Borough of Harrow to serve as Members of the Trust for such period of time as the Corporation may decide. The Mayor of the London Borough shall be an *ex-officio* member of the Trust.

4.3 REPRESENTATIVES OF AFFILIATED ORGANISATIONS

- (a) Voluntary Organisations within the London Borough of Harrow which support the objects of the Trust may apply to affiliate to the Trust.
- (b) Affiliated organisations shall be entitled to appoint each year two representatives. Each organisation may also appoint two deputy representatives who shall be able to attend and vote at any meeting of the Trust when the appointed representatives are unable to attend.
- (c) In the event of the representatives or deputy representatives being unable to attend, organisations shall be entitled to appoint (through their representatives or deputy representatives) ad hoc representatives to attend and vote at any meeting of the Trust.
- (d) All such organisations should give an account of their activities and, if required by the Trust, a copy of their constitution & rules, a balance sheet and any other information.

4.4 INDIVIDUAL MEMBERS

The Trust may admit as Individual Members any persons who support the objects of the Trust. Individual Members over the age of 18 shall have the power to vote and may serve on the Trust's Executive Committee or any of its Sub-Committees.

4.5 CORPORATE MEMBERS

The Trust may admit as Corporate Members any organisations, whether amateur or professional, which support the work of the Trust. These organisations shall be entitled to appoint a representative to attend and vote at any meeting of the Trust and who may serve on the Executive Committee or any of its Sub-Committees.

4.6 CONSULTATIVE MEMBERS

The Trust may invite persons with special knowledge or experience to serve on the Trust or

its Executive Committee in a consultative capacity, but such persons shall not be entitled to vote.

4.7 LOSS OF MEMBERSHIP

- (a) The Membership of any person or organisation whose subscription remains unpaid for two years shall lapse.
- (b) Any person or organisation who, by a majority decision of the Trust, has not supported the objects of the Trust, shall forfeit Membership of the Trust (provided that the individual or organisation concerned shall have the right to be heard, accompanied by a friend if necessary, before a final decision is made).

5 OFFICERS

- (a) The Mayor of Harrow for the time being shall be invited to become President of the Trust during his term of office.
- (b) The following honorary officers shall be elected at the Annual General Meeting:-
 - (1) *Chairman*
Vice-Chairman
Honorary Treasurer
Honorary Secretary
 - (2) and other such other honorary officers as the Trust may decide from time to time.
- (c) The officers under 5(b)(1) shall be *ex-officio* members of every Committee or Sub-Committee of the Trust.
- (d) The Chairman and other elected officers shall retire at the Annual General Meeting next following, but will be eligible for re-election.
- (e) The Trust may appoint a Secretary or Organiser and such other employees as it may think necessary and may fix their remuneration and terms of employment.

6 MEETINGS

- (a) The Trust shall normally meet not less than three times a year.
- (b) One of these meetings shall be the Annual General Meeting to approve the Annual Report & Accounts and to elect officers and the members of the Executive Committee.
- (c) Other Trust meetings may be convened by the Chairman or Honorary Secretary whenever necessary.
- (d) A meeting of the Trust shall be convened by the Chairman upon the request of not less than ten Members of the Trust.
- (e) The quorum for a General Meeting shall be not less than 15 voting Members. No business shall be transacted unless a quorum is present.

7 COMMITTEES

- (a) The Trust and its property shall be administered and managed in accordance with this Constitution by the members of its Executive Committee, constituted by this clause. The members of the Executive Committee shall be the Charity Trustees within the meaning of the Charities Act 1993.

- (b) The Executive Committee shall comprise:
 - (1) The Mayor
the Chairman
the Vice-Chairman
the Honorary Secretary
the Honorary Treasurer
the 4 Local Authority Members
 - (2) Up to 8 elected from the Membership under clauses 4.3 to 4.6 inclusive above.
- (c) The Executive Committee shall be elected at the Annual General Meeting and shall hold office until the end of the Annual General Meeting next following.
- (d) The Executive Committee will have the power to co-opt up to 3 other Members.
- (e) Casual vacancies shall be filled by the Executive Committee until the next Annual General Meeting.
- (f) The quorum for a meeting of the Executive Committee will be 5 members.
- (g) Decisions will be made by a majority vote of members present. In the event of equal votes, the motion will be deemed to have failed.
- (h) The Executive Committee may appoint Sub-Committees. The Chairperson of any Sub-Committee must be a member of the Executive Committee (see clauses 7(b) & (d)).

8 FINANCE

- (a) Income may be in the form of grants from Central or Local Government Authorities, subscriptions, donations, legacies, profits on activities or be derived from other sources.
- (b) All monies shall be devoted to all or any of the objects of the Trust.
- (c) Subject to the provisions of clause 8(d) (professional charging clause) and except with the prior written approval of the Charity Commissioners no Executive Committee member may:
 - (i) receive any benefit in money or in kind from the Trust; or
 - (ii) have a financial interest in the supply of goods or services to the Trust; or
 - (iii) acquire or hold any interest in the property of the Trust (except in order to hold it as a trustee of the Trust).
- (d) Any Executive Committee member who possesses specialist skills or knowledge, required by the Trust for its proper administration may charge and be paid reasonable charges for the work of that nature done by him or her or his or her firm, when instructed by the other Executive Committee members to act on behalf of the Trust.
Provided that:
 - (i) at no time shall a majority of the Executive Committee members benefit under this provision; and
 - (ii) an Executive Committee member shall withdraw from any meeting of the Executive Committee whilst his or her own instruction or remuneration, or that of his or her firm, is being discussed.
- (e) The Trust may make financial grants to individuals or organisations in order to further the objects of the Trust.

- (f) The financial year of the Trust shall end on 31st March in each year. At the end of each financial year, accounts shall be prepared, audited or examined by a suitably qualified person, and submitted to the Members not less than 14 days before the date of the Annual General Meeting.
- (g) The Trust shall fix the rates of subscriptions for Members or may delegate this to the Executive Committee.
- (h) The Honorary Treasurer will be responsible for keeping the proper accounts and for all monies received or payable by the Trust.
- (i) The auditor or examiner will be appointed at each Annual General Meeting.

9 DISSOLUTION

If the Executive Committee at any time shall decide by a two-thirds majority of those present and voting that it is expedient or desirable that the Trust should be dissolved, the Executive Committee shall call a Special Meeting of the Trust of which no less than 21 days' notice in writing shall be given to each Member specifying the terms of any resolution to be proposed thereat.

If at such Special Meeting it is decided by a simple majority of those present and voting that the Trust shall be dissolved, any assets remaining after the satisfaction of all proper debts or liabilities shall not be paid or distributed amongst Members, but shall be given to such charitable body or bodies having objects similar to the objects of the Trust (and whose constitutions contain similar provisions as to applications of profits and alienation of assets) as the Special Meeting may decide.

10 ALTERATIONS TO THE CONSTITUTION

- 10.1 This Constitution may not be altered without a resolution properly proposed, seconded and approved by the majority vote of a meeting of the Trust. A proposal for the alteration of the Constitution must be received by the Honorary Secretary of the Trust in writing at least 21 days before the meeting at which the alteration is to be considered. Fourteen days' notice of such meeting must be given by the Honorary Secretary to the Members, and must include notice of the alterations proposed.
- 10.2 No amendment may be made to clause 1 (the Title clause), clause 2 (the Objects clause), clause 8(c) (Executive Committee members not to be personally interested clause), clause 9 (the Dissolution clause) or this clause without the prior consent in writing of the Charity Commissioners. Nor may any amendment be made which would have the effect of making the Trust cease to be a charity at law.

[This Constitution was agreed upon at a Public Meeting held on 10th December 1997
and revised at a further Public Meeting held on ~~(day month year)~~

3 March 1999

John J. Verben
Chairman
28th June 2000

HARROW HERITAGE TRUST - CHARITY NO 1072773**STATEMENT OF FINANCIAL ACTIVITIES****YEAR ENDED 31st MARCH 2011**

FUND	UN- RESTRICTED FUND	RESTRICTED FUND	RESTRICTED FUND	RESTRICTED FUND	RESTRICTED FUND	TOTAL 2011 £	TOTAL 2010 £
	GENERAL £	PUBLIC WORKS OF ART £	HERITAGE GRANTS £	WORK WITH YOUNG PEOPLE £	HEADSTONE MANOR APPEAL £		
INCOMING RESOURCES							
Subscriptions & Donations	1467	15000	0	0	25	16492	1503
Local Authority Grants	8100	0	15000	0	0	23100	23100
Legacy and other Grants	15000	0	0	0	0	15000	1735
Deposit Interest	319	63	364	10	12	768	1040
Total Incoming Resources	24886	15063	15364	10	37	55360	27378
RESOURCES EXPENDED							
Direct Charitable Expenditure	7653	0	16190	1853	0	25696	28551
Administration	1873	0	0	0	0	1873	2312
Total Resources Expended	9526	0	16190	1853	0	27569	30863
NET INCOMING RESOURCES MOVEMENT IN FUNDS	15360	15063	-826	-1843	37	27791	-3485
Transfer between funds	0	0	0	0	0	0	0
Total Funds at 1 April 2010 b/f	31627	10944	71296	3019	2436	119322	122807
Total Funds at 31 March 2011	46987	26007	70470	1176	2473	147113	119322
REPRESENTED BY BALANCE SHEET							
Debtors & Prepayments	15586	0	0	0	0	15586	793
Balances on Deposit	57206	25927	69879	856	2225	156093	144325
Balances at Bank	1477	80	591	320	248	2716	1443
Total Current Assets	74269	26007	70470	1176	2473	174395	146561
Less Creditors and Accruals	27282	0	0	0	0	27282	27239
Net Assets at 31 March 2011	46987	26007	70470	1176	2473	147113	119322

HARROW HERITAGE TRUST-CHARITY NO 1072773**NOTES TO THE ACCOUNTS****YEAR ENDED 31ST MARCH 2011****Accounting Policies**

The accounts have been prepared under the historical cost convention and in accordance with applicable accounting standards and the Statement of Recommended Practice for Charities issued in February 2005

INCOMING RESOURCES

	2011	2010
	£	£
SUBSCRIPTIONS AND DONATIONS		
GENERAL FUND		
Membership subscriptions and tax recovered	1,176	1,116
Donations including from Silver Arrow Competition	291	362
	-----	-----
	1,467	1,478
	-----	-----
PUBLIC WORKS OF ART		
Contribution towards design, creation and installation of a public work of art in Stanmore	15,000	-
	-----	-----
HEADSTONE MANOR APPEAL		
Donation	25	25
	-----	-----
TOTAL SUBSCRIPTIONS AND DONATIONS	16,492	1,503
	-----	-----
GRANTS FROM LONDON BOROUGH OF HARROW		
Historic Buildings	15,000	15,000
Harrow Nature Conservation Forum	5,900	4,000
Work with Young People	-	1,500
Plaques	-	300
Graffiti Removal	-	100
Administration and unspecified	2,200	2,200
	-----	-----
	23,100	23,100
	-----	-----
LEGACY AND OTHER GRANTS		
	15,000	1,735
	-----	-----
DEPOSIT INTEREST		
Accounts held with COIF Charities Deposit Fund	768	1,040
	-----	-----
TOTAL INCOMING RESOURCES	55,360	27,378
	-----	-----

HARROW HERITAGE TRUST-CHARITY NO 1072773

NOTES TO THE ACCOUNTS (CONTINUED)

YEAR ENDED 31ST MARCH 2011

RESOURCES EXPENDED

	2011	2010
	£	£
DIRECT CHARITABLE EXPENDITURE		
GENERAL FUND		
Harrow Nature Conservation Forum	7,133	7,096
Architectural awards expenses	183	-
Plaque at Pinner Hill Farm	337	-
Other	-	503
	<u>7,653</u>	<u>7,599</u>
HERITAGE GRANTS		
West House, Pinner restoration	-	10,000
Bernays Memorial Hall, Stanmore refurbishment	-	10,000
St. John the Evangelist Church, Stanmore, window repairs	690	-
St. Mary's Church, Harrow on the Hill repairs	2,500	-
Great Stanmore Old Brick Church repairs	3,000	-
Christ Church, Roxeth restoration	10,000	-
	<u>16,190</u>	<u>20,000</u>
WORK WITH YOUNG PEOPLE		
Contribution to loan boxes at Harrow Museum	1,800	-
Prizes for poetry competition at West House, Pinner	53	-
Other	-	952
	<u>1,853</u>	<u>952</u>
TOTAL DIRECT CHARITABLE EXPENDITURE	<u>25,696</u>	<u>28,551</u>
ADMINISTRATION EXPENDITURE	<u>1,873</u>	<u>2,312</u>
TOTAL RESOURCES EXPENDED	<u>27,569</u>	<u>30,863</u>

HARROW HERITAGE TRUST-CHARITY NO 1072773**NOTES TO THE ACCOUNTS (CONTINUED)****YEAR ENDED 31ST MARCH 2011****HERITAGE GRANT COMMITMENTS AT 31ST MARCH 2011**

	2011 £	2010 £
Heritage tombs and memorials repairs at All Saints Churchyard, Harrow Weald	2,000	2,000
Blackwell Memorial Gate survey, at Harrow Weald Recreation Ground	950	950
Other	-	13,190
	-----	-----
TOTAL COMMITMENTS	2,950	16,140
Available for future allocation	67,520	55,156
	-----	-----
HERITAGE GRANTS FUND AT 31ST MARCH 2011	70,470	71,296
	-----	-----

NOTES**DEBTORS AND PREPAYMENTS**

Debtors included a legacy of £15,000 paid in March 2011 and received in April 2011 by Harrow Heritage Trust.

CREDITORS

Creditors at 31st March 2011 included £26,307 received in the previous year from Harrow Council relating to funds paid by Harrow Strategic Partnership under the Local Area Agreement. This sum is to be spent on designated projects in four open spaces in Harrow under terms set out in an agreement dated 5th November 2009. This sum will be released to revenue as and when the related expenditure has been incurred.

TRUSTEES AND RELATED PARTIES

During the year:

1. a number of trustees were reimbursed expenditure incurred by them on the Trust's behalf.
2. certain transactions, eg the receipt of grants and payment/receipt of subscriptions, took place between Harrow Heritage Trust and other bodies associated with certain trustees.

These accounts were approved by the Trustees on 13th July 2011 and signed on their behalf by:

Martin Verden

Robin Youle

Chairman

Hon. Treasurer

Independent Examiner's Report to the Trustees of Harrow Heritage Trust

I hereby report on your accounts for the year ended 31st March 2011 as set out on the attached pages.

Respective responsibilities of Trustees & Examiner

The trustees are responsible for the preparation of the accounts. You consider that the audit requirement of S43 (2) of Charities Act 93 (CA93 The Act), as amended by S28 of the Charities Act 2006, does not apply. It is my responsibility to report, on the basis of procedures specified in the General Directions given by the Charity Commissioners under S43 (7) (b) of the Act, as amended, whether particular matters have come to my attention.

Basis of report

My examination was carried out in accordance with the General Directions given by the Charity Commission under S43 (7) (b) of the Act, as amended. That examination includes a review of your accounting records and a comparison of the accounts to those records. It also includes consideration of any unusual items or disclosures in the accounts and to seek explanations from you to them. The procedures undertaken do not provide all the evidence that would be required in an audit, and consequently I do not express an audit opinion on the accounts.

Independent Examiner's statement

During my examination, no matter has come to my attention:

- 1) which gives me reasonable cause to believe that in any material respect the requirements
 - to keep proper accounting records in accordance with S41 CA93: &
 - to prepare accounts which accord with the accounting records and the requirements of that Act, have not been met; or
- 2) to which, I believe, attention should be drawn in order to enable a proper understanding of the accounts to be reached.

C J Backhouse BA (Hons) FCA
Hon. Independent Examiner
Miller House
Rossllyn Crescent
Harrow
Middlesex
HA1 2RZ

14 August 2011

Supporting documents section 4: Proof of ownership

Community and Environment
Corporate Director – Brendon Hills

By Hand

Tuesday 20 September 2011

Your ref.:

Dear Harrow Nature Conservation Forum;

I am pleased on behalf of Harrow Council to confirm:

1. The land identified in the bid is owned by Harrow Council as freehold and we offer total support for both the aims and content of the bid scheme,
2. My Department, Public Realm Services, has final responsibility for its maintenance and upkeep of the Common. Volunteers from Harrow Nature Conservation Forum have the Council's full support in their operations on the site. Harrow Council has no paid wardens for its green belt open land and is very grateful for the work that the Forum volunteers do in maintaining the various reserves as excellent sites for both wildlife and human visitors.
3. Continued maintenance of the Common is undertaken through Harrow Council's revenue works. Our current regime includes undertaking an annual 'cut and collect' grass cut on the Common. These areas are defined by the wardens, Simon Braidman and David Bailey and in previous years we have cut Holly Brook Rise and the majority of the open areas on Bluebell Heath. All arisings are removed from site. I confirm that if the project to restore Bluebell Heath to a fully open status is successful then we will extend this annual cut over all or part of the area in accordance with the maps provided by the wardens.
4. In addition I can advise you that liability for the site both before and after the scheme will rest with Harrow Council.

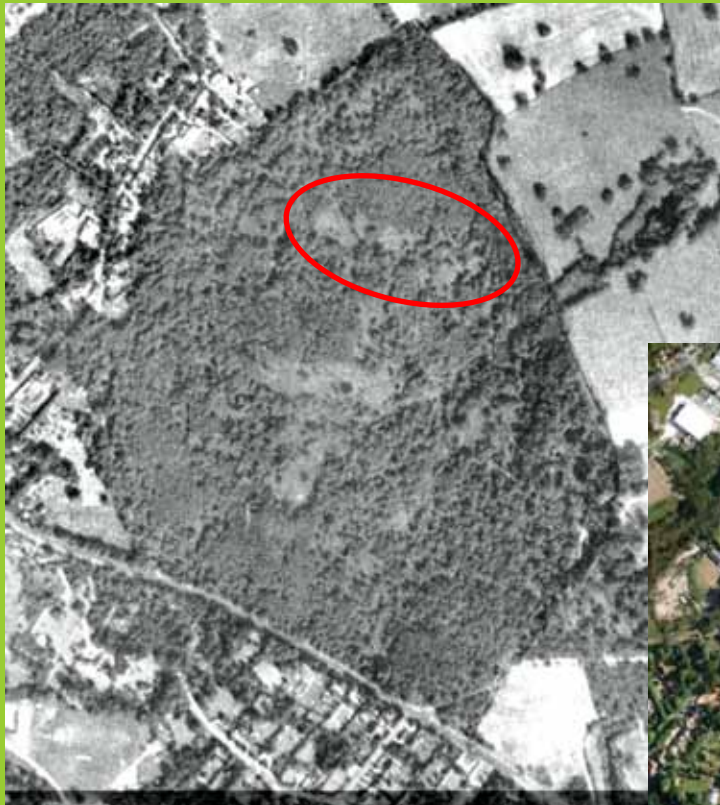
If I can be of any further assistance please do not hesitate to contact me.

Yours sincerely



David Corby
Public Realm Maintenance Service Manager - Community & Environment

Supporting documents section 5: a small selection of visual aids
(eight pages)



Left: Stanmore Common in 1945. Bluebell Heath (circled) is largely open.



Right: Stanmore Common in 2010. The same area is circled. The white area is New Heath. The loss of open area here and elsewhere on the Common is clear.



Above: Close up of the Bluebell Heath area in 2010. N: New Heath - as the first photograph shows this was in 1945 part of the Bluebell Heath open area. G: remaining open glades within Bluebell Heath. We propose to fell and remove the trees separating these glades. S: Area of more mature woodland to be scraped of topsoil following tree removal, to make New Heath continuous with the restored open area.



Relict acid grassland on the site. Heather (ling, *Calluna vulgaris*) is a component of the herb mix along with tormentil (small yellow flowers), grasses and bracken. Gorse, seen on the left, is another characteristic heathland plant.



Part of Bluebell Heath showing overdominance of bracken. In the proposed work the two large oaks on the right will be spared but the young secondary woodland on the left, dominated by birch, will be cleared to connect this glade with another about 20 metres to the west.

Volunteers will spray Asulox to selectively inhibit bracken growth and return the plant community to a more equal mix, such as that shown in image page 2.



Seedling heather in the year after seed planting.



Young volunteers from the Chinmaya Foundation weeding out birch saplings on New Heath in 2011. The dark green plants underfoot are all heather, which is now well established.



Maintenance of the smaller open glades Cerrislande and Oakmeade by volunteers. The top picture shows David Bailey, assistant voluntary warden of Stanmore Common, using a brush butter on 31st July 2011 to cut the grass and herb mix in Cerrislande. The second picture shows volunteers from the British Trust for Conservation Volunteers raking up the cut material on the 2nd of August 2011. Cutting the areas by hand allows us to maintain a complex mix of short grass and bushes. However, Bluebell Heath is too large to maintain in this way and is instead cut by Harrow Council machinery.



An area of Bluebell Heath that was cleared of small trees by about 20 volunteers on Sewa Day 2011 (21st November). Apart from the overdominance of bracken this worked well, but the area cleared is small in relation to the total that needs to be cleared to join the presently isolated open glades within Bluebell Heath.

Volunteers will spray Asulox to selectively inhibit bracken growth and return the plant community to a more equal mix, such as that shown in image page 2.



Five leaflets on different sites maintained by the Harrow Nature Conservation Forum. All design and artwork by Steve Bolsover. Printed by CATS Solutions Ltd.

PDFs of these leaflets are available from the Harrow Nature Conservation Forum website <<http://www.harrowncf.org/>>.

Supporting documents section 6: Letters of support

Place Shaping
Andrew Trehern
Corporate Director

Stephen Bolsover,
Chairman,
Harrow Nature Conservation Forum,
40 Walton Drive,
Harrow,
Middlesex
HA1 4XA

29 September 2011

Our ref:DJV290911

Dear Harrow Nature Conservation Forum;

I am writing to express my full support as Biodiversity Officer for the Borough of Harrow for your application to the Heritage Lottery Fund to restore acid grassland and heathland at Bluebell Heath on Stanmore Common.

Until 1987 Stanmore Common had the status of a Site of Special Scientific Interest because of the large areas of heathland and acid grassland, habitats that are rare in lowland Britain. In 1989 the London Ecology Unit wrote "The most interesting parts of Stanmore Common, however, are those clearings where remnants of the original acid grassland and heathland flora persist. These are generally fringed with bracken, gorse and young birch saplings before grading into the woodland proper. Such acid-loving plants as heath bedstraw, common tormentil and the regionally rare devil's-bit scabious occur here, together with less selective grassland herbs: cat's ear and mouse-ear hawkweed, for example. Ling, or heather as it is more commonly known, is still found in very small patches - a witness to past land-use." However in 1987 Stanmore Common lost its SSSI designation due in large part to the loss of significant areas of these habitats (and the consequent loss of their characteristic invertebrate fauna) as a result of the growth of scrub and secondary woodland. Stanmore Common remains one of five Sites of Metropolitan Importance in Harrow.

Two of the clearings, now called Cerrislande and Oakmead, are maintained by hand by Harrow Nature Conservation Forum volunteers. Here scrub and tree encroachment has been halted and partially reversed, and careful mowing has allowed a vigorous recovery of

heather. However woodland encroachment has continued in the largest of the open areas, Bluebell Heath, dividing it by belts of trees into little more than a series of grassy rides where nevertheless a diverse remnant population of acid grassland flora persists, as recorded in a detailed survey undertaken by Make Natural Ltd. in 2010. A further problem, particularly in Bluebell Heath, is the growth of bracken that threatens to shade out grasses and grassland flora.

Lowland dry grassland and lowland heathland are both UK biodiversity action plan (BAP) priority habitats and are listed as Habitats of Principal Importance in England under the Natural Environment and Rural Communities (NERC) Act 2006. In recognition of their importance, the London BAP includes acid grassland and heathland as priority habitats and gives a target of increasing their area in the London region by 20 and 30 hectares respectively by 2015. Harrow designated these habitats as two of its nine priority habitats in its own BAP. In particular, two targets of the Harrow BAP (dated 2008) are to "Work with the London Acid Grassland Working Group to develop a project and funding strategy to restore an area of 0.5 hectares (of acid grassland)" and "To continue the heathland restoration work at Stanmore Common and seek to restore heathland at Harrow Weald Common". The project proposed by the Harrow Nature Conservation Forum is fully in accordance with these aims and the Council, and I as its Biodiversity Officer, support it strongly.

If the application is funded then I will advise the Forum as well as liaising directly with the tree clearance contractors to ensure that sensitive areas, such as the flush where Heath Spotted Orchid is found, are not damaged. I will liaise with and guide the volunteer botanical surveyors to confirm the accuracy of their identification and measurement. I will enter the data they generate on the Greenspace Information for Greater London (GIGL) database. I expect to spend 50 hours per year on site at Bluebell Heath plus a further 10 hours per year entering data on GIGL.

Yours sincerely



Denis Vickers
Biodiversity Officer, London Borough of Harrow



Dr Nigel Reeve
Head of Ecology, The Royal Parks
Email: nreeve@royalparcs.gsi.gov.uk
Mobile tel. 07976 209282

12/10/2011

Re. Stanmore Common, HLF bid

Dear Harrow Nature Conservation Forum,

I am writing to you as the chair of the London Acid Grassland and Heathland Habitat Action Plan Working Group of the London Biodiversity Partnership (LBP) to offer my strong support for your proposed project and your funding bid.

Lowland Acid Grassland and Heathland are priority habitats in the London Biodiversity Action Plan and both are also national priority habitats. This reflects their rarity, ecological importance and high amenity value as attractive open habitats for recreational use.

It is a clear aim of the LBP that in London the area of these two habitats should be increased both by the expansion of existing sites and the restoration of relict parcels. Stanmore Common is identified in the Lowland Acid Grassland habitat action plan as a highly suitable site for restoration and appears on the GIGL (Greenspace Information for Greater London) map of such sites.

Acid Grassland and Heathland are closely related habitats, with Acid Grassland providing an essential part of the habitat mosaic of Heathland. However, much of London's Acid Grassland is in a degraded state, lacking heather and other characteristic low-growing shrubs. During our recent site visit, the Working Group was particularly impressed by the persistence of stands of heather within the acid grassland remnants on Bluebell Heath; this gives us confidence that, once the invasive trees are removed, a high quality mosaic of Acid Grassland and Heathland will re-establish over the whole area. Connecting Bluebell Heath with the restored heather-rich heathland at New Heath should, within a few years, create one continuous open space that grades from Heathland dominated by heather at the northwest end to an Acid Grassland dominated area in the southwest, containing just that valuable grassland-heather mosaic that has been lost from many of London's other Acid Grassland sites.

If the project is funded our Working Group will support the project in two ways:

- The combined expertise of the Acid Grassland and Heathland Habitat Action Plan Working Group will be available in advising you and your management team.
- We will liaise with you in the creation of educational materials. We have produced a number of leaflets and an education pack (containing a freely accessible library of acid grassland habitat images), and we will give you all the help we can as you generate your own material.

We therefore strongly support your application to the Heritage Lottery Fund for monies to perform this restoration of Acid Grassland and Heathland on Stanmore Common and trust that your funding bid will be successful.

Yours sincerely,

A handwritten signature in black ink, appearing to read 'N. Reeve', written in a cursive style.

Dr Nigel Reeve
Head of Ecology, The Royal Parks



Harrow Museum &
Heritage Centre

Dear Harrow Heritage Trust

Support for the Heritage Lottery Fund application by Harrow Nature Conservation Forum

This letter is to express my support for your application to the Heritage Lottery Fund to restore Bluebell Heath on Stanmore Common, and to outline my involvement and that of Harrow Museum in the project.

As Heritage Services Manager for Harrow Council, I will take an active involvement in the steering committee to advise the development, shaping and implementation of the interpretation manual and the training of tour guides. I will also be advising on and assisting with the production of interactives and a handling collection for use by the tour guides. As part of the steering committee, I will help in the development of the learning aspects of the project.

In addition, I will take an advisory role on any evaluation steering group. This would be to advise on an effective evaluation of the project to identify significant learning outcomes – in what ways different users have engaged with the Heath and its history, what they have discovered and what they have learnt from their experiences.

Additional consultancy may be required which falls outside of the normal working time and practices of the Heritage Services Manager role, which will be chargeable at £25.00 per hour, made payable to Harrow Museum.

As Heritage Services Manager, I will be assisting Harrow Nature Conservation Forum in developing engaging displays about the project, its purpose and what work is being undertaken. Harrow Museum will act as host for any displays, with additional exciting opportunities for further display in a number of Harrow public venues, such as the leisure centre and libraries. This will promote the work of the Forum and the Heath to new potential visitors.

Yours sincerely

Steven Gregory
Heritage Services Manager, Harrow Council
Tel: 020 8863 6720 Email: Steven.Gregory@harrow.gov.uk



26 Edward Road
Harrow
HA2 6QB

25th October 2011

Dear Harrow Nature Conservation Forum,

The Harrow Natural History Society very much supports the proposal by Harrow Nature Conservation Forum to restore Bluebell Heath in Stanmore Common to its original state as one continuous open area.

Stanmore Common and Harrow Weald Common are the two open areas in Harrow located on the Pleistocene gravels that overlie the Claygate Beds along the Harrow Weald Ridge. In the 19th century these areas were open common land used for sheep grazing with a flora of acid grassland and in particular heathland with heather and gorse. However when grazing stopped towards the end of the century a succession of overgrowth began. This started with gorse and was followed by birch trees, then oak, ash and beech and has culminated in all of Harrow Weald Common, and the majority of Stanmore Common, being covered in secondary woodland. Only on Stanmore Common do remnants of the acid grassland and heathland remain as isolated glades within the woodland. Small, isolated communities of plants and animals are precarious since death of a few individuals within the remnant can represent complete extinction of the species within that remnant.

Lowland acid grassland and heathland are two of the rarest habitats in Britain, so the remnants on Stanmore Common are very precious. The proposed project will connect the currently isolated glades safeguarding the survival of the rare plants and invertebrates in these biological communities.

The Harrow Natural History Society will contribute to the project:

1. We will be a partner in the creation of a Statement of Significance for Bluebell Heath, using our expertise in botany and zoology to define the special features of the site.
2. We will participate in the process of creating a nature trail running through Stanmore Common that guides visitors through Bluebell Heath, explaining the history of the site and describing some plants and animals visitors are likely to see. We have experience of this role: we contributed very significantly during the creation of the nature trail in Harrow weald Common, a project headed by Harrow Council's biodiversity Officer, Denis Vickers.

3. The many photographs that our members have taken of plants and animals in Stanmore Common will be made available for use in all educational material that the Forum creates – leaflets, explanatory panels and interpretation manuals. Items that we have collected on the Common – animal skulls, pressed flowers, fungi and many others – will be made available for exhibitions about Bluebell Heath and the restoration project.

We anticipate that our work on the project will total 120 person hours, comprising visits to the site plus work at home researching and writing.

The Harrow Natural History Society was formed in 1970 with the aim of fostering interest in natural history and related subjects with particular emphasis on the flora and fauna of sites within the London Borough of Harrow. Members are active in preservation and conservation, particularly of the Harrow Green Belt and other areas of interest and beauty within the borough. Within our number we have experts in botany, mycology, lepidoptera, invertebrates and ornithology.

Yours sincerely



Geoffrey Corney
President

The Stanmore Society

for the protection of local interests



Please reply to: 8 Old Forge Close
Stanmore
HA7 3EB

16th September 2011

Chairman Harrow Nature Conservation Forum

Stanmore Common Restoration Project

Dear Harrow Nature Conservation Forum

The Stanmore Society strongly supports the proposal of the Forum to restore the open acid grassland area of Bluebell Heath on Stanmore Common. As residents we have noticed the reduction in open area on the common over the last ten years, with the concomitant reduction in the variety of views and landscapes as one walks around.

A number of open glades have been lost to woodland completely, and we are concerned that the same will happen to Bluebell Heath, which was ten years ago one continuous open space. We have also noticed the increase in bracken coverage, and while bracken is attractive in moderation, it now dominates on many of the open areas, crowding out all the other vegetation and suppressing the attractive grassland flowers that are a feature of the Common.

The proposal by the Forum will both restore the open space and reduce the bracken coverage, restoring this area of acid grassland to its former flower-rich glory and greatly increasing the amenity for the residents of Stanmore, Harrow and Bushey.

The Stanmore Society is the residents association for Stanmore and includes Stanmore Common within its area of interest. We count 800 plus residents of Stanmore in our membership

Yours sincerely



Tony Raymond
President
Stanmore Society

Example of support from users of the Common

Rose Cottage,
2, Little Common,
Stanmore,
MIDDLESEX, HA7 3BZ.
Phone: 020 8954 9129
e-mail: cormackrsc2@tiscali.co.uk

Harrow Nature Conservation Forum,
40, Walton Drive,
Harrow, HA1 4XA.

16/09/2011

Dear David Bailey,

Nice to see you the other day on Stanmore Common. May I start by saying how much I value the work which you and your volunteers do on the Common. I have been walking my dogs there every day for over 20 years, summer and winter. I seldom see anyone, but it is obvious that a lot of work is being done keeping the paths clear, dealing with trees that have fallen across the track, mending bridges, building new bridges etc., etc. I applaud your planned new project and hope your approach to the Lottery fund succeeds. I enclose a cheque for £100 as a small token of my appreciation (anyway it is enough to get your chaps a few crates of ale!).

You ask for suggestions. I entirely agree that the balance between trees and meadow has tilted too far towards trees. Clearing away small trees, shrubs and bracken from Bluebell Heath, leaving just a few large trees, would be a big improvement. Creating a meadow with as many different colours of wild flower would be great. I think heather would be rather overwhelmed, but it is doing very well on New Heath, which looks a bit too stony to be a typical English meadow. You people tend to focus on endangered species, which is admirable, but the average chap mainly wants a lot of colour.

The new bench in the field next to Bluebell Heath is well positioned to get shade from the mighty oak in summer. (It happens to be about the mid-point of my daily walk - a good spot for a breather). Another bench at the top of that field would have a good view of the oak, especially in winter when it snows.

Thanks for the invitation to join your advisory group - sadly I must decline. Although I am retired, I am very behind with projects which I must complete before the Grim Reaper gets me.

With best wishes,



(Dr R.S.Cormack)

**Supporting documents section 8:
Bluebell Heath Restoration Project
Management Structure**

